

# Build Your Own Fan Boat!

Take Your Child to Work Day project by Sharon West and colleagues 4/26/12

Shape Boat if desired (use plastic knife like a saw)

Tip: shape the boat only looking from the top. This foam is so light that any shaping of the boat bottom can make it tip over too easily.



Add Keel if desired (cut groove, press in plastic piece)

Tip: Use the piece of plastic as a guide to help cut a straight line.

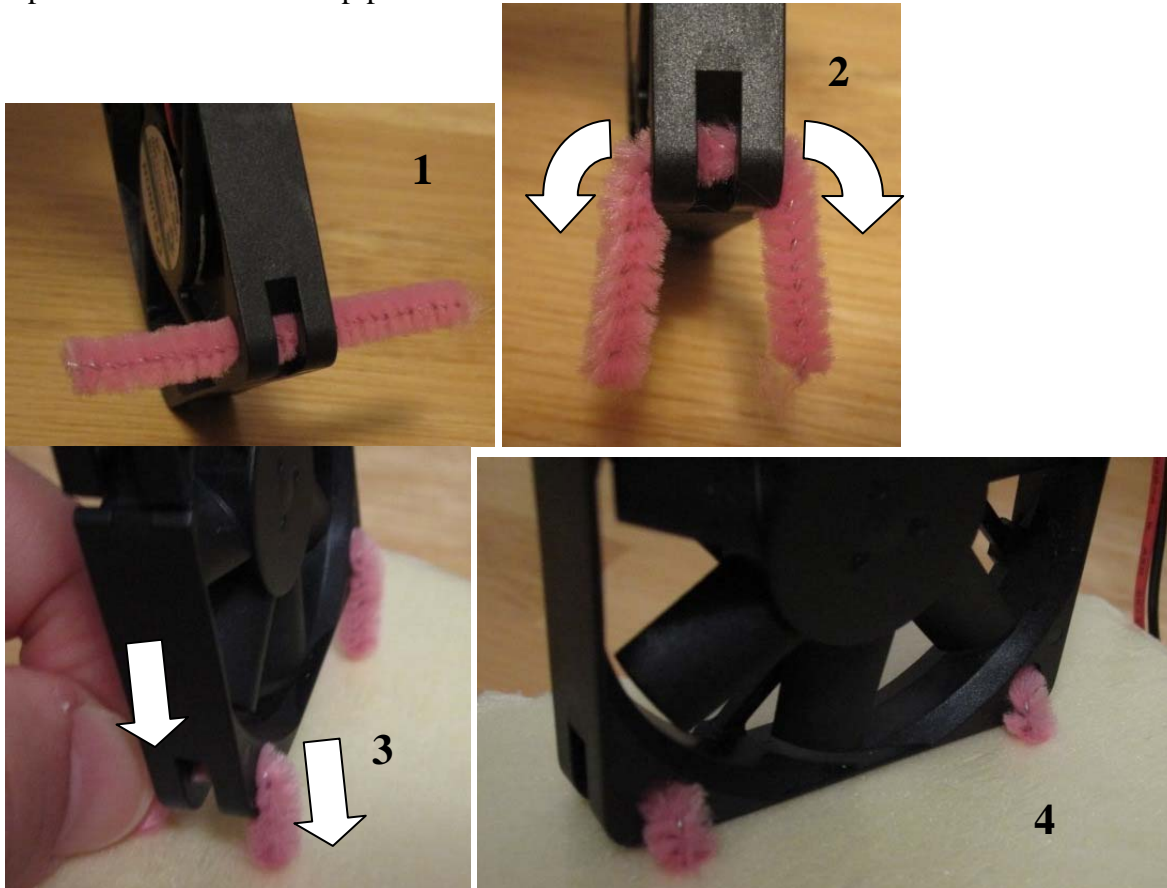


Find Fan Direction  
(arrow is imprinted on fan's edge)

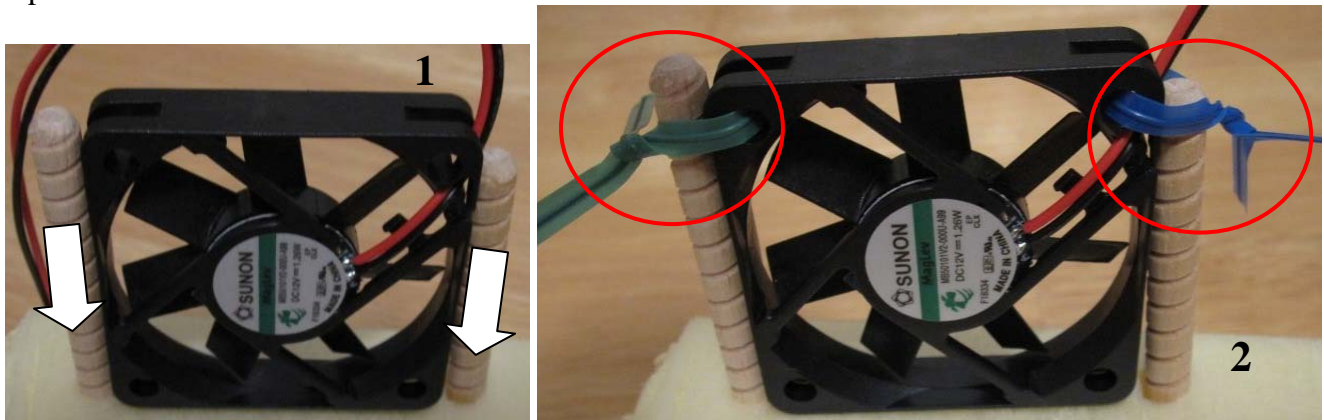


Attach Fan to Boat:

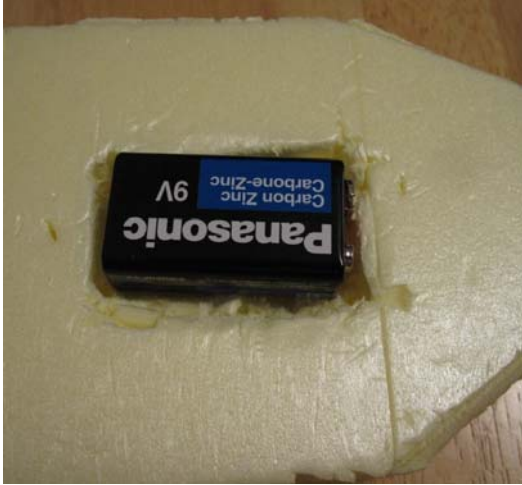
Option 1: Attach fan with pipe-cleaners



Option 2: Attach fan with dowels and twist-ties:



Attach Battery to Boat: (several options)



Decorate Your Boat





## Test Your Boat!

Tip: bathtubs, kitchen sinks, and kiddie pools all work well

Tip: You have no control of direction, so avoid big ponds where the boat could get away from you.

